

# THE Gateway MAGAZINE

HELPING TO KEEP PURCHASING DECISION MAKERS INFORMED

25,000+ readers read THE GATEWAY in over 7,500 companies

August 2019



**CONSOLIDATED  
COATING  
COMPANY**

SEE PAGE 3



**YANKEE  
CASTING**

SEE PAGE 15

COVER PHOTO : Consolidated Coating Company | 5 William Way | Bellingham, MA 02019



**ROUTING**

- Buyer \_\_\_\_\_
- MFG Engrg \_\_\_\_\_
- Mat Mgr \_\_\_\_\_
- Production \_\_\_\_\_
- Marketing \_\_\_\_\_
- Other \_\_\_\_\_
- Return to \_\_\_\_\_

# CONTENTS

AUGUST 2019 | ISSUE 242

## SHOWCASE FEATURES

**03** Consolidated Coating Company

**15** Yankee Casting

## INDUSTRY NEWS

**22** Regional Press

**24** Classifieds

**29** Upcoming Events

Thanks for all the great commentary regarding the Gateway Magazine's new look and feel. We're so excited to have the first issue under our collective belt and are quite pleased with how things turned out. As we move forward we welcome any and all feedback as we're continually looking to improve and serve you with exactly what you're looking and hoping for out of this monthly periodical. We want to manufacture and serve you with the best industry resource possible, so, please, let us know if there's anything we need to be doing in our pursuit of accomplishing this.

One new item we'd like to point out is the launch of our new website [www.thegatewaymag.com](http://www.thegatewaymag.com), which adds further visibility into the magazine and each of your respective companies. We're spotlighting all of the magazine's feature stories and sharing them on our social platforms (follow us on Facebook, Instagram, and LinkedIn!). You can also download digital versions of the magazine's archived issues, and each of our advertisers are searchable in our new online business directory – making it easier for the extended Gateway Magazine network to find you and your service offerings.

Thanks again for reading and for your continued patronage!



August 2019

# THE Gateway MAGAZINE

## PUBLICATION MANAGER

Matthias Roberge

## EDITORIAL DIRECTOR

Chris Hislop

## ART DIRECTOR

Adam Kaufmann

## ONLINE MARKETING

Adam Kaufmann

Beau Pingree

## ADVERTISING INQUIRIES

(877) 463-4020

[info@thegatewaymag.com](mailto:info@thegatewaymag.com)

Hours: 9am-5pm Mon-Fri

## MAILING ADDRESS

PO Box 428

Portsmouth, NH

03802

## FOR FREE SUBSCRIPTIONS

[www.thegatewaymag.com](http://www.thegatewaymag.com)

## CHANGE OF ADDRESS:

In ordering a change of address, give both the old and new addresses. Allow two months for change to become effective. The publisher will attempt to handle unsolicited articles with care, but magazine assumes no responsibility for them.



© 2019: Reproduction in whole or in part  
without permission is strictly prohibited.

# Ventilation Solutions for Machine Shops

AIR TO AIR HEAT EXCHANGERS GIVES EMPLOYEES MUCH NEEDED FRESH AIR TO BREATHE

*Fresh Air Ventilation systems designed to remove fumes and odors from your shop*



800-622-8078 [www.ventusa.com](http://www.ventusa.com)

## **AA** ABLE Air

**Air Compressor Sales and Service**

- We service ALL Brands of compressed air equipment
- Compressors, vacuum pumps, air dryers, blowers...etc.
- 24-hour emergency service
- Air piping design and installation
- Flow and KW metering

- Reliable
- Energy Efficient
- Fixed speed from 3 hp to 605 hp
- Direct coupled one-to-one drive compressors
- Variable speed drive compressors from 10 hp to 350 hp
- German engineering at its finest!
- Rotary screw compressors for every budget!



Serving  
Vermont,  
New Hampshire  
and Maine

[www.ableairne.com](http://www.ableairne.com)



**KAESER**  
COMPRESSORS  
*Built for a lifetime*

**New England's Original Dealer and Still the Best Place to Buy Your New Kaeser**

**For prompt, professional service, call: 1-800-462-0228**

Serving New England For Over 50 Years

CONSOLIDATED COATING COMPANY:

APPLYING THE POWERFUL FINISHING TOUCH



## CONSOLIDATED COATING COMPANY

### CONSOLIDATED COATING COMPANY – A HISTORICAL VIEW:

Consolidated Coating Company (CCC) started back in 1978. Founded by John Mattson, he ran the Company until 2009, when he sold it to Jeffrey Rudman, its current owner and Chief Executive. In 2009, CCC was facing many challenges and also substantial change in the industry and customer requirements. CCC's customer base was too concentrated, and its mix of business was heavily focused on wet paint application over plastic. Powder coating was in its infancy at CCC, as were functional coatings like EMI/ESD/RFI shielding. The new Management team at CCC had to navigate a number of issues that substantially changed company operations.

### Changes to Industry and Customer Requirements:

- Existing customers moved manufacturing overseas to China.
- Plastics technology improves reducing the need for paint finishing.
- Regulation of VOC emissions trends finishing towards the more environmentally friendly powder coating.
- Lean, JIT, Six Sigma initiatives executed at most large companies pressure suppliers to shorten lead times, improve quality, and cut costs.

In response to these changing market conditions CCC executed a customer acquisition strategy and a number of strategic initiatives that ultimately diversified the customer base and better positioned the company to serve its evolving market and customers.

**Customer Acquisition Targets:**

- Military
- Metal fabricators
- OEMs
- Aerospace
- Medical
- Robotics

**Strategic Initiatives:**

- **Converted wash system from Iron Phosphate to Zinc Phosphate:** Zinc Phosphate is the preferred military pre-treatment for ferrous metals. This project provided differentiation for CCC in the marketplace. There are very few finishing shops that provide a Zinc Phosphate pre-treatment that is compliant with military specification TT-C-490 because it is difficult and costly to maintain.
- **Quality Focus:** Focused on operational process and procedures. Emphasized repeatability, documentation and batch traceability. Important requirements when you are targeting business segments that require certifications. CCC continuously reviews and improves all aspects of their operation, and all CCC employees contribute to this effort.

- **Started a second shift.** This was critically important to achieving the company’s goal of not just shortening lead times, but also improving the ability to respond to special requests, while obviously providing more overall capacity.
- **Added blasting to the list of capabilities.** CCC’s blasting cabinet provides another means to properly clean and prepare a surface for finishing. A properly blasted surface provides for the very best adhesion between substrate and paint.

CONSOLIDATED COATING COMPANY – WHO THEY ARE TODAY

Consolidated Coating Company is a top-tier applicator/job-shop of industrial paints and coatings for metal and plastic parts with a very diversified customer base. Operating out of Bellingham, MA, CCC services Companies within the Greater New England area.



**“I’ve been sending out different sized valves to Consolidated Coating to be painted and packed into crates, and I’ve been very pleased with the results we get. They come back to us in great condition every time! CCC’s staff is friendly and easy to work with, and always willing to go out of their way to make a rush order happen for us.”**

*Lauren McCue, Buyer/Planner, Kidde-Fenwal, a UTC Company, Ashland, MA*

(CONTINUED ON PAGE 6)

# ELECTROPOLISHING SERVICES

- ⊖ New England's Largest Electropolisher
- ⊖ ISO 9001 & 13485 Certified
- ⊖ 12 Electropolishing Lines
- ⊖ Precision Rates of Removal (.0001")
- ⊖ Small & Large Parts
- ⊖ Custom Packaging Services
- ⊖ Expedited Service Available



New England Electropolishing  
800-672-6616  
www.neelectropolishing.com  
sales@neelectropolishing.com

# RIGGING AND HEAVY HAULING

- ◆ 70 Years Experience
- ◆ Forklift Capacity to 60,000 lbs
- ◆ Machinery Moving
- ◆ Mill-Wright Services
- ◆ Domestic & Export Crating
- ◆ Inside Storage / Warehousing



Tel. (603) - 623-1533

**RIGGERS**

[ipcote.com](http://ipcote.com)

# MATERIALS TESTING

Waiting forever for your testing results?



**FineCut6™**

A versatile abrasive cutoff saw manufactured and marketed by SMS

**Why?**

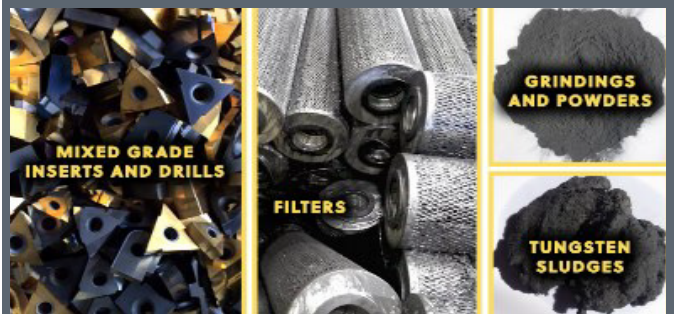
**Contact Us Now to Discuss our Lead Times**

Failure Analysis - Metallography - SEM-EDS Analysis  
Mechanical Testing - Hardness - Corrosion - Chemical  
Coatings - Weld Analysis - Grain Size & MORE



[info@smslabs.com](mailto:info@smslabs.com) | [www.smslabs.com](http://www.smslabs.com) | 508-347-5288

8 Picker Rd, Sturbridge MA 01566



# RECYCLE YOUR CARBIDE

Inserts, Drills, Solids, Sludges, Filters



**ReCarb**  
Tungsten Carbide Recycling

Call: **617-593-8242**

or visit [www.recarbllc.com](http://www.recarbllc.com)

28 Wolcott Street

Readville, MA 02136



**CCC serves the following industries:**

- Metal fabricators
- Plastic fabricators
- Aerospace and aviation
- Architectural/construction steel and aluminum
- Commercial lighting and display
- Electrical equipment and enclosures
- Industrial equipment and machinery
- Medical devices and instrumentation
- Military/defense manufacturing
- Oil and gas equipment
- Sports and hobby equipment
- Telecommunications

**CCC provides the following coating solutions:**

***Liquid and powder coatings***

- Cosmetic, including auto quality Class A finishes
- Durable and corrosion resistant
- Military
- Aerospace

***ESD/EDM/RFI coatings***

***Dry film lubricants***

***PTFE coatings***

**CCC was able to effectively respond to all of the market changes identified above:**

- While a great deal of manufacturing did move overseas, CCC was able to replace that business through aggressive sales and retention initiatives. What they found was that much of the finishing that moved overseas was done poorly and had to be repainted in the U.S. providing additional opportunities for the company to show the quality of their work.
- A great deal of injection molded plastic finishing did go away. In 2009, plastic finishing probably amounted to 70% of CCC's business, today it is less than 20% as the mix of business completely flipped. At the same time, CCC was able to show steady growth.
- Much of the growth at CCC over this time period was fueled by their powder coating business which trended with market influences that favored the environmentally friendly coating technology. In 2009, powder coating probably contributed no more than 10% of CCC's business, today it is closer to 50%.
- Obviously, lead times on finishing work vary by the complexity of the job, but in general terms, CCC turns around most jobs in 3-7 business days. With that being said, CCC is built to be completely CUSTOMER FOCUSED. If a client needs a quicker turnaround, and it is feasible, CCC will get it done. David Jacobson,

(CONTINUED ON PAGE 8)

# Machining Solutions

We Can Make The Difference When Time & Speed-To-Market Are Critical

## We Offer:

- ▶ Fast Response
- ▶ Engineering
- ▶ Design
- ▶ Consulting
- ▶ Prototypes
- ▶ Kitting
- ▶ Solidworks
- ▶ MasterCam 3D
- ▶ Assembly
- ▶ Value-added Service


## We Can Do:

- ▶ Laser Cutting
- ▶ EDM
- ▶ CNC Milling
- ▶ Laser Engraving
- ▶ Grinding
- ▶ Turning
- ▶ Welding



75 Oxford Ave.  
Dudley, MA 01571  
www.kokosmachine.com

Tel: 508-943-2700  
Fax: 508-949-0372  
info@kokosmachine.com



Since 1948

## Howard Products Inc.

### Precision Sheet Metal Fabrication


Capacity to 1/4" Mild & Stainless Steel, Aluminum, Lexan, and more!

*3D Design Help*

Our 37+ experience assures your project the BEST that our Engineering Dept. can offer.

From *Prototype to Production:*

## We do it all!


7 Brookfield Street  
Worcester, Ma. 01605  
sales@HowardProducts.biz  
508-757-2440

## WHERE QUALITY COUNTS

# CNC Machining

**Prototype & Production Quantities**  
Let us put our engineering and machining talents to work for you!

<p><b>Precision Milling</b> AutoCAD Design Master CAM Machine</p>	<p><b>Precision Turning</b> Design Capability Quick turnaround</p>
---	--

Personalized Service

Now offering **LASER PART MARKING**  
Using our new  
**TRUMF VMC1 LASER MARKING MACHINE**

We offer one-stop shopping where we will handle your complete job. So whether heat treated, plated or painted we can supply to your requirements the way you want it.

**ISO 9001:2000**  
**SAE AS9100**

## R & S REDCO, INC

106 Finnell Drive. Ste 24 Weymouth, MA 02188  
Tel: 781-331-4300 Fax: 781-331-4800  
www.rsredco.com Email: sales@rsredco.com

## High Efficiency Tri-Mist Coolant Mist Collectors Mist & Smoke Removal Assured

**Efficient Oil/Coolant Mist & Smoke Removal**

**Effective with Both Oil and Water Soluble Metal Working Fluids**

**No Disposable Filters to Replace**

**Low Operating Cost Energy Efficient**

**Virtually Vibration Free**



**Made in the U.S.A.**

### Industrial Air Filtration

**Ketcham & Company, Inc.**  
www.ketchaminc.com  
**203-322-6667**

CCC's Vice President of Sales and Business Development, has called CCC "PROFESSIONAL HOOPJUMPERS" for this very reason, and that is a label the company really strives to live up to.

Consolidated Coating Company has a highly qualified and experienced staff. For those organizations or project teams that have yet to develop their finishing requirements and/or paint specifications, CCC are always available to assist clients in selecting the most appropriate coating to achieve their project objectives. CCC frequently provides research and development for their clients, assisting with testing and measurement, all the way through first article. CCC has equipment to test and measure color, gloss, thickness, and adhesion. Manufacturers have looked to CCC for their expertise and in-depth knowledge of coatings and finishing processes for different metal and plastic substrates. If you're not sure on where to even begin, CCC is here to help – making the process as smooth and painless as possible and leaving you with a remarkable finished product.

Consolidated Coating Company also provides silk screening and pad printing services to parts, provides specialized packaging, and offers limited assembly of parts.

## WHAT ELSE IS COOKIN'?

### More recent Initiatives undertaken in CCC's evolution include:

- Investments in technology. CCC is in the process of implementing a new MRP system called Epicor. This system will touch every department at CCC and will give management substantially better visibility to job costs, scheduling, quality data, and overall business performance. Ultimately this data will drive future initiatives and contribute to CCC's continuous improvement initiative
- Investments in new capabilities. CCC is about to move a brand new batch oven into production. This oven provides high-temp curing that will allow us to add the application of PTFE and other high temp coatings to our repertoire of capabilities. Additionally, this oven's dimensions of 20'x10'x10' substantially increase the size parts CCC is capable of powder coating, and also provides them with additional capacity for the type of work they're already performing.
- Investments in existing capabilities. CCC is in the process of replacing the first two stages of their wash system and replacing heating elements at each heated stage. Not a sexy investment by any stretch, but CCC takes energy conservation seriously and maintains all of its equipment to the highest standards. This was a necessary and significant commitment by the company.

(CONTINUED ON PAGE 10)



# JCB



Performance Machine, LLC

(603) 415-0110 Concord, NH

## PRECISION MULTI-AXIS MACHINING

Specializing in Mill/Turn Machining of  
Stainless Steel and Non-Ferrous metals:

316L • 304L • Nitronic 50/60

17-4 H1150 • HH1150 • H900



[www.jcbperformance.com](http://www.jcbperformance.com)



# TRACEY

GEAR & PRECISION SHAFT

ISO 9001 CERTIFIED

## Custom Gears Thread Grinding & Precision Shafts

Serving New England  
since 1945

740 York Avenue  
Tel: 800-774-GEAR

Pawtucket, RI 02861  
[www.traceygear.com](http://www.traceygear.com)

[sales@traceygear.com](mailto:sales@traceygear.com)

## Contract Cutting Waterjet

Waterjet

A customer service  
driven company  
since 1967.

- Large work areas
- Pallet changer
- Superior nesting software for optimum yield
- Prototypes and production

Laser



Learn more...

1-800-969-3437

Visit us at [www.sharplesdie.com](http://www.sharplesdie.com)

# SHARPLES

W. R. Sharples Company, Inc.

211 John Dietsch Sq., N. Attleboro, MA 02763

## Metal Stampings

Double Action Deep Drawing

Washers • Discs • Rings  
**UP TO 80" Diameter**  
**500 TON CAPACITY**

Stampings to 3/4" thick

Short or long runs

Wire EDM



Tool & Die Makers

Quick Turn Around

CAD/CAM Design

## Peter Forg Mfg. Co.

130 YEARS OLD AND GROWING

888-625-4577

Fax 617-625-0331

50 PARK ST. PO Box 433 SOMERVILLE, MA 02143

[www.peterforg.com](http://www.peterforg.com)

YOUR FIRST LINE OF DEFENSE

When it comes to military coatings work, customers choose to go to CCC for a variety of reasons. First CCC has experience with most military finishing specifications. CCC can provide a pre-treatment compliant with TT-C-490, Method 1. CCC has the scale to process a high volume of parts in a timely fashion, and they have the equipment to handle large and/or heavy armor plate efficiently.

PUT CONSOLIDATED COATING COMPANY TO WORK FOR YOU

Above all else, Consolidated Coating Company cares about its customers and the quality of work that they provide them with. You will recognize that from your very first interaction with anyone from the CCC office. They provide the highest level of communication throughout the life of a job from quote to delivery and every step in between. Many customers choose to do business with Consolidated Coating Company on a continuing or repeat basis mainly due to the company's nimble management and easy-going demeanor, and the notion (and fact) that they emphasize quality customer service over all else. If they have to jump through a series of hoops to make a customer happy, they'll do it and wholeheartedly enjoy the challenge. And heck, CCC can pick up your raw parts and deliver you finished parts within 100 miles of their Bellingham, MA location. Put the job in CCC's hands, and expect superior service, care, and exemplary end results – each and every time.

*Consolidated Coating Company is the most progressive full service independent finishing company in the Northeast, specializing in the powder coating and liquid coating of a wide variety of plastic and metal substrates. They apply both decorative and functional coatings in quantities of parts, from prototype to high production volume. With offline spray booths and five overhead conveyor spraying systems, CCC can accommodate not only a varying degree of volume parts, but also a wide variety of configurations of parts as well.*

*Their 43,500 square feet of finishing space not only allows for the finishing of a wide variety of parts for their many customers simultaneously, but also allows the storage of parts for a smooth, on-time flow of product to you and ultimately to your customer.*



**David Jacobson**  
**Vice President, Sales & Business Development**

**5 William Way | Bellingham, MA 02019**  
**508-966-4800**

**[www.consolidatedcoating.com](http://www.consolidatedcoating.com)**

# Teflon™ coatings

Improve part performance  
with unique properties of Teflon™ coatings!

Coatings can be applied to:

- metals
- elastomers
- ceramics
- composites
- rubber
- glass



## As a licensed industrial applicator, Donwell...

- provides custom coating services to your specifications.
- coats both small and large parts to close tolerances in quantities from 1 to 1,000,000.
- has over 50 years of high-performance coating application expertise.



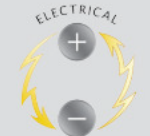
1-800-864-2702

[www.donwell.com](http://www.donwell.com)

For FREE Coating Sample



Use of the Teflon™ mark requires a direct trademark license. Customers and distributors of Donwell can only resell LICENSEE's product as licensed with the Teflon™ mark.



7 & 9 Electronics Ave Danvers, MA 01923

## PROCESS

- ▶ Anodizing, Black, Clear, Red, Blue, Gold, Green
- ▶ Anodize, Hard
- ▶ Black Ebonal
- ▶ Black Oxide
- ▶ Black Passivate
- ▶ Brass
- ▶ Bright & Matte Tin
- ▶ Bright Dip
- ▶ Bright Nickel
- ▶ Cadmium
- ▶ Caustic Etching
- ▶ Chemical Film
- ▶ Copper
- ▶ Electroless Nickel
- ▶ Electropolish
- ▶ Gold
- ▶ Passivate
- ▶ Phosphate
- ▶ Pickling
- ▶ Rhodium
- ▶ Silver
- ▶ Zinc

## SERVICES

- Clean Room Finishing
- Sandblasting
- Baking—High Temperature
- Salt Spray Corrosion Testing
- X-ray Florescence Thickness
- Vapor Blasting
- Buffing
- ROHS COMPLIANT CHEMICAL FILM
- ROHS COMPLIANT ZINC
- Environmentally Responsible
- High Tech Waste Management
- Quick Turnaround
- Sample Pieces

ISO 9001:2008, 8251QM8001, 11 May 2013

Tel: 978-223-4292 Fax: 978-223-4297

Web: [www.tdfmetalfinishing.com](http://www.tdfmetalfinishing.com) Email: [info@tdfmetalfinishing.com](mailto:info@tdfmetalfinishing.com)

**Gear & Spline Specialists Since 1954!**  
**AS9100 REV C & ISO9001:2008 CERTIFIED**

**UNITED GEAR & MACHINE, CO.**

1087 EAST STREET SOUTH  
SUFFIELD, CT 06078  
860.623.6618 FAX: 860.654.1521  
[SALES@UNITEDGEARCT.COM](mailto:SALES@UNITEDGEARCT.COM)

**NO JOB TOO SMALL!**

**[WWW.UNITEDGEARCT.COM](http://WWW.UNITEDGEARCT.COM)**

SPUR GEARS • HELICAL GEARS • WORM GEARS • KEYWAYS  
INTERNAL GEARS • BROACHING • GEAR GRINDING • FACE GEARS  
• BEVEL GEARS • SPROCKETS/TIMING BELT PULLEYS

**WE CUT STRAIGHT BEVEL GEARS**

INTERESTED IN BEING  
SHOWCASED IN THE  
GATEWAY?

---

**[chris@thegatewaymag.com](mailto:chris@thegatewaymag.com)**

or

**(877) 463-4020**

---

WE ARE ALWAYS LOOKING  
FOR GOOD STORIES.

## Water-Based Parts Cleaning Systems

# Alliance

Manufacturing, Inc.



Aquamaster CB-1200E  
Conveyorized Belt Cleaning System



Aquamaster CI-1400E  
Conveyorized Indexing Cleaning System

- Custom configurations
- Ease of maintenance features
- Stainless steel construction
- Wide variety of applications
- Built to specific customer needs
- Environmentally friendly
- No solvents
- Made in the USA

For more information, contact us at  
1-800-969-7960 or visit [www.alliancemfginc.com](http://www.alliancemfginc.com).

- Tungsten Carbide
- EDM Wire
- Inconel
- Titanium
- Ferrous
- Nonferrous

*Specializing in Recycling Industrial Scrap*

# HARDING

## METALS, INC

Creating recycling solutions for any type of business

- Utilizing our easy to deal with staff
- With our clean and uniform equipment



Handling all types of metals, in any form

- From mild steel to high-temp aerospace alloys
- Chips, punchings, turnings, borings, skeletons, inserts, bits. **You produce it; we handle it.**

**Call or email us about Recycling and Reconditioning your Cutting Fluids**

1-800-370-JUNK (5865)

42 Harding Dr. Northwood, NH 03261

[info@hardingmetals.com](mailto:info@hardingmetals.com)

[www.hardingmetals.com](http://www.hardingmetals.com)

*Big enough to get things done, small enough to do them efficiently.*

**Quality Turned Machined Parts**  
 New Hampshire Machine Products, Inc.

- QUICK TURNAROUND ON QUOTES
- JOBS PRICED COMPETITIVELY
- BROAD RANGE OF MATERIALS



**QUALITY TO CLOSE TOLERANCES:** Utilizing single spindle automatic screw machines from 1/32" through 2" capacity, as well as CNC equipment.  
**SUPPORTED BY:** A broad range of secondary capabilities to include drilling, threading, tapping, milling and slotting.  
**AUDIT INTENSIVE:** Complete internal tracking of all orders start to finish.  
**PROCESS CONTROLLED:** Includes raw material traceability.  
**QUALITY:** Quality assurance programs performed to MIL-STD-105D.  
**PRODUCTION RUNS:** From 50 to 100,000 pieces.

**CALL OR FAX US REGARDING YOUR SCREW MACHINE REQUIREMENTS AND WE GUARANTEE YOU A QUICK, COURTEOUS AND INTELLIGENT RESPONSE.**

**NEW HAMPSHIRE MACHINE PRODUCTS, INC.**



CUST. TEL: 1-800-639-9404  
 Reg. Tel: 603-772-4404 Fax: (603) 772-6043  
 10 KINGSTON RD.— P.O. BOX 975  
 Exeter, NH 03833  
[www.newhampshiremachineproducts.com](http://www.newhampshiremachineproducts.com)

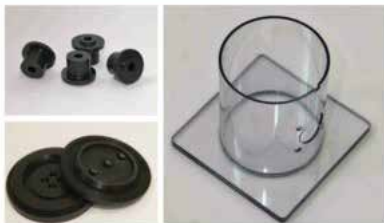
E-Mail: [barbara@newhampshiremachineproducts.com](mailto:barbara@newhampshiremachineproducts.com)



**Plastic Fabrication & Distribution since 1972**

**Sheet • Rod • Tube • Custom Shapes**

- CNC Routing
- Precision Cutting
- Machining
- Turning
- Milling
- Laser Cutting
- Plastic Welding



8 Liberty Drive, Londonderry, NH 03053 | 800.752.7759  
 Email: [sales@plasticsupply.com](mailto:sales@plasticsupply.com) | [www.plasticsupply.com](http://www.plasticsupply.com)



**RIGGING & FABRICATION**



INDUSTRIAL TRANSFER & STORAGE INC.

- Lifting Capacity Over 100,000 lbs.
- Servicing New England, The U.S., & Internationally
- New 10 x 12 CNC Plasma Table
- Specialists in Plant Relocation & Strategic Machine Moves

**Successfully Moving Industry Since 1984**

**508-765-9178**

Southbridge, MA • [www.industrialtransfer.com](http://www.industrialtransfer.com)

**HEAT TREATING**



- VACUUM
- INTEGRAL QUENCH
- CONTINUOUS BELT
- NITRIDING
- STRESS RELIEVING
- ANNEALING

\*Pick up and Delivery Available\*

**Certified By General Dynamics for AMS 2759**  
 Aluminum Heat Treating      Long Vertical Capability  
 Sandblasting                      Parts Cleaning  
 Brazing                                  Straightening

**COUNTY HEAT TREAT**

32 Howe Avenue | Millbury, MA 01527  
 Tel: (508) 865-5885 Fax: (508) 865-4033  
 Website: [www.countyheattreat.com](http://www.countyheattreat.com)

**ISO 9001: 2008 CERTIFIED**

Centrally Located in New England. 2 miles from MA Pike, Exit 10A  
 24 Hour Service and weekends if Needed.



# Consolidated Coating Company

POWDER & LIQUID COATING SPECIALISTS  
FOR PLASTIC AND METAL SUBSTRATES

## WE'RE PROFESSIONAL HOOP JUMPERS

IF THAT'S WHAT IT TAKES TO MAKE OUR  
CUSTOMERS HAPPY!



### Our Capabilities:

- PTFE/Non-stick Coatings
- Military/Defense
- Industrial
- Aerospace
- Dry Film Lubricants
- Antimicrobial & Biomedical
- RFI/ESD/EMI
- Batch Oven Processing
- Conveyorized Processing
- Pre-treatment - Zinc Phosphate, TT-C-490 Type I
- Decorative
- Functional
- Silk Screening / Pad Printing
- Masking
- Packaging
- Limited Assembly

**Get Your Quote: (508) 966-4800**  
**www.ConsolidatedCoating.com**

Call David Jacobson at (508) 966-4800 or email [david@consolidatedcoating.com](mailto:david@consolidatedcoating.com)

5 William Way, Bellingham, MA 02019 | [www.consolidatedcoating.com](http://www.consolidatedcoating.com)

## Precision Metal Fabrication Specialists

- LASER
- SHEARING
- STAMPING
- BENDING
- FORMING
- ASSEMBLY
- MACHINING
- DRILLING
- TAPPING
- GRINDING
- DEBURRING
- ROBOTIC WELDING
- WELDING (MIG, ARC, TIG AND SPOT)



1 West Main Street | South Hadley, MA | 01075  
Tel: (413) 532-9022 | Fax: (413) 536-4647  
Email: [info@tfabinc.com](mailto:info@tfabinc.com) | [www.techfabinc.com](http://www.techfabinc.com)



- ♦ Engineering Assistance
- ♦ Jit Deliveries
- ♦ Zero Defect Quality
- ♦ Prototype To Production
- ♦ Finishing Services
- ♦ CAD/CAM
- ♦ Dependable On-Time Delivery
- ♦ Accountability

YANKEE CASTING: FORGING A STRONGER FUTURE



**What do you do when a massive fire rips through your facility causing millions of dollars in damages and jeopardizing your operations?**

If you're Yankee Casting, you rebuild and you come back bigger, stronger, and better than ever.

Established in 1961 by the late Albert Vecchiarelli, Yankee Casting has grown from a 42,000 square foot facility (pre-2016) to a 51,000 square foot family owned and operated company as of 2018 (a direct result of rebuilding following the aforementioned fire).

One of only a few aerospace foundries in North America, Yankee Casting operates as a non-ferrous sand foundry creating castings and precision parts by pouring molten metallic compounds into intricately fabricated custom sand molds for their customer base.

**Yankee Casting pours three alloy groups:**

**BRONZE**  
Bronze castings

**ALUMINUM**  
Aluminum castings are used for their light weight and are applied to a wide range of commercial and aerospace parts.

***Applications include:***

- Racing
- Medical
- Machinery
- Aerospace
- Military
- Naval
- Food processing

Yankee's melting equipment offers them the ability to melt cleanly 400 or 800 lb. batches with rotary degassing with argon. The result is an ideal, porosity free aluminum.

**Key benefits:**

- Light weight
- High strength
- Reduced machining times

**MAGNESIUM**

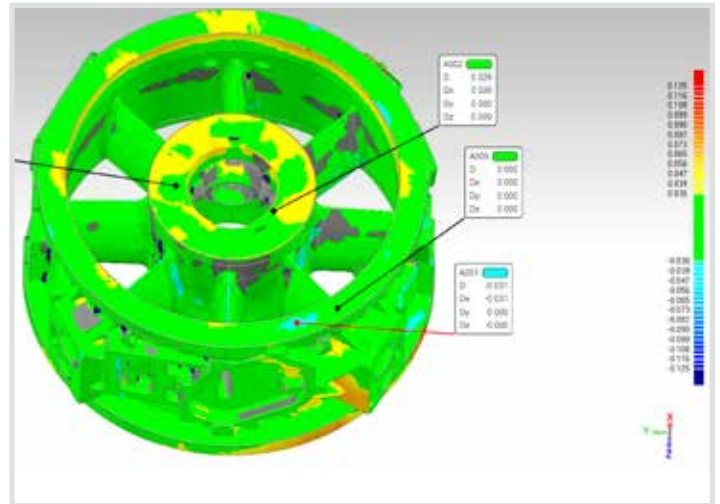
Magnesium castings are used for their light weight, stiffness, damping capacity, and dimensional stability.

**Applications include:**

- Automotive prototypes
- Robotic parts
- Medical equipment
- Machinery
- Racing engine components
- Space engine components
- Aircraft engine components
- Helicopter gear boxes
- Test equipment

**Key benefits:**

- Light weight
- Stiffness
- Damping capacity
- Dimensional stability



AS9100 AND NADCAP CERTIFIED, YANKEE'S IN-HOUSE CAPABILITIES INCLUDE (BUT ARE NOT LIMITED TO):

- Prototyping
- Design engineering, and CAD and flow modeling
- Pattern creation, repairs, and modifications
- 3D scanning to CAD
- Full production runs
- Robotic cutoff and grinding
- NDT X-ray / FPI
- Heat treat furnace applications
- Tensile testing
- Spectrometer capabilities
- Welding of aluminum and magnesium compounds
- Chemical testing

Since the rebuild, Yankee Casting has benefitted from approximately 60% more manufacturing space which has enabled the company to take advantage of increased available job capacity and the ability to produce larger sized castings than the previous facility allowed. Engineering capacity has also been greatly increased in anticipation of new product implementations and the company's attention to being technologically advanced with the inclusion of robotics and software-based simulation and testing practices.



(CONTINUED ON PAGE 18)



THE FOUNDRY OF THE FUTURE - TODAY

Yankee Casting pours three alloy groups:

- Bronze
- Aluminum
- Magnesium



**Our capabilities:**

- |   |  |
|---|--|
| • Prototyping                                   | • NDT X-ray / FPI                          |
| • Design engineering, and CAD and flow modeling | • Heat treat furnace applications          |
| • Pattern creation, repairs, and modifications  | • Tensile testing                          |
| • 3D scanning to CAD                            | • Spectrometer capabilities                |
| • Full production runs                          | • Welding of aluminum and magnesium alloys |
| • Robotic cutoff and grinding                   | • Chemical testing                         |



Telephone: 1-860-749-6171  
 Fax: 1-860-763-3342  
 Info: Info@YankeeCasting.com  
 Hours: Monday - Friday / 7am - 4pm



**Fabricating & Machining Specialist**

- ▶ CNC Turning to 48" dia.
- ▶ CNC Milling (40" x 120")
- ▶ 250" Milling Travel
- ▶ 206" Turning Capacity
- ▶ Repair Specialist
- ▶ 100% Quality Control
- ▶ Certified Welding ASME Sec 8
- ▶ AWS Certified Aluminum, SST
- ▶ ISO 9000 Compliant
- ▶ Pickup & Delivery



**Innovative MACHINE • INC.**

40 Snow Road • Winchester, NH 03470  
 Tel: 603-239-8082  
 Fax: 603-239-6380  
 Contact: Terry Haskins  
 www.innovative-machine.com  
 tmhaskins@innovative-machine.com



**PAUWAY CORP.**



THINK OF THE FINISH BEFORE YOU START!

Aerospace & Defense Painting • C.A.R.C. Coating Specialists  
 Dry Film Lube & Teflon Coatings • Industrial Painting  
 EMI/RFI Shielding • Powder Coating • Silk Screening  
 Pad Printing • Laser Marking & Engraving • Contract Manufacturing  
 Assembly • Custom Packaging • Stripping & Sandblasting

866-247-4082  
 63 North Cherry Street  
 Wallingford, CT 06492

AS9100 & ISO 9001 Certified  
 www.pauwaycorp.com

Yankee's simulation programming offers the highest in quality standards by giving advanced insight into the manufacturing processes. Simulation capabilities:

- Simulates real time pouring
- Liquid metal temperature animation
- Gating geometry and evaluation
- Filling temperature results
- Absolute velocity animation
- Air entrapment animation
- Fraction solid animation
- "Hot Spot" results including potential porosity and shrinkage

This new application of technology allows Yankee Casting to mitigate many metallurgical defects prior to even finalizing the tooling design saving the customer time, money, and headache.

**FURTHER ADVANCED JOB CAPABILITIES INCLUDE:**

NADCAP Certified for materials testing, welding, heat treat, and x-ray.

Digital radiography: Designed for inspecting and testing environments, Yankee's system offers real-time imaging, with manual and automated inspection modes.

Laser scanning inspection: Yankee has the ability to 3D inspect all external surfaces of the castings via FARO Laser Scanning and model compare.

Manufacturing execution system: Yankee Casting utilizes shop floor software which allows for the ability to show videos that give customers the "inside" vantagepoint of work instruction access and real time work status. It's as if you're right on the floor with Yankee's team!



*Yankee Casting is 3rd generationally owned family operated casting company who are proud of the work they do, and of the companies they work with. If you're looking for quality casting solutions and a fresh perspective, look no further. Add yourself to their ever-growing list of partners. Contact Yankee today to put their quality castings to work for you!*



243 Shaker Road  
Enfield, CT 06082  
(860) 749-6171  
[www.yankeecasting.com](http://www.yankeecasting.com)

# National Chromium

(860) 928-7965

(860) 928-7965

Fax (860) 928-1408

10 Senexet Road • Putnam, Connecticut • 06260

Plating of Hard Chrome, Electroless Nickel,  
Mass Finishing Media, Equipment and Supplies  
Mass Finishing, Tumbling & Deburring  
Web Page: [www.nationalchromium.com](http://www.nationalchromium.com)



## MINI-BROACH MACHINE CO., INC.

Contract Broaching Services, Broaches, Tooling,  
Broach Sharpening, & Broaching Machines, with  
over 45 years experience.

[info@Minibroach.com](mailto:info@Minibroach.com)

Tel: (978) 386-7959

Fax: (978) 386-7123



Rush Broaching Services Available!

### Complete Bearing & Industrial Supply Solutions

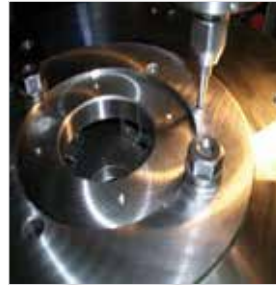


- ♦ BEARINGS
- ♦ MOTOR REPAIR
- ♦ BALL SCREW REPAIR
- ♦ ENGINEERED PROJECTS
- ♦ POWER TRANSMISSION PRODUCTS AND MUCH MORE



[www.qpgllc.com](http://www.qpgllc.com)

1-866-868-9574



PRECISION MACHINING  
- SINCE 1963 -

- Precision Machining -
  - Toolmaking -
  - Jig Grinding Service -
- CLASSIC JIG GRINDING**

[jiggrind@snet.net](mailto:jiggrind@snet.net)  
[classicjiggrinding.com](http://classicjiggrinding.com)  
Ph (860) 870-4900  
Fax (860)870-1900

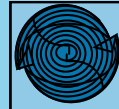


### Spur & Worm Gears Internal / External Splines Broaching, Hobbing, Shaping

## JoVal Machine Company, Inc.

515 Main Street Yalesville, CT 06492  
Tel (203) 284-0082 Fax (203) 284-9605

[www.jovalmachine.com](http://www.jovalmachine.com)



Automatic screw machine and CNC  
Machined products for your industry

### Merrimack Manufacturing Company Inc.

217 HARRISON ROAD • BRIDGTON, MAINE 04009  
TELEPHONE 207.647.3566 • FAX 207.647.3588

[mmc6@myfairpoint.net](mailto:mmc6@myfairpoint.net)

\* Also available: Inserts for rubber / plastic moldings

Federal Firearms Lic  
# 6-06-009-07-7G-03042

YOUR ONE STOP SHOP  
FOR ALL YOUR PART MARKING NEEDS

203-265-9366 | [sales@ctlaserengraving.com](mailto:sales@ctlaserengraving.com)  
[www.ctlaserengraving.com](http://www.ctlaserengraving.com)

# HYDE™

Industrial Blade Solutions

# Blades and Knives

*Do you have an industrial knife or blade challenge? Hyde has solutions!*



- ☑ Made To Order Solutions
- ☑ Short Lead-Time Solutions
- ☑ Fast, Responsive Quotes



Machine Knives • Industrial Blades • Specials  
*cutting* Rubber • Paper • Food • Cloth & Textiles  
Hydraulic Hose • Packaging • Coated Abrasives

Our in-house capabilities include Laser Cutting, Blanking, Grinding, Vacuum Heat Treating, Honing and much more.

*ISO9001 Registered Quality System*

Hyde Industrial Blade Solutions • 54 Eastford Road, Southbridge, MA 01550

Ph: (800) 872-4933 or (508) 764-4344 • Fx: (508) 764-8172 • [www.hydeblades.com](http://www.hydeblades.com)

Serving Industry's Machine Knife and Industrial Blade Needs Since 1875

***Hyde Industrial Blade Solutions . . . Solutions You Can Count On!™***

## PROMOTE YOUR COMPANY IN THE GATEWAY MAGAZINE

25,000+ readers read THE GATEWAY in over 7,500 companies

**[info@thegatewaymag.com](mailto:info@thegatewaymag.com) or call: (877) 463-4020**

# VACUUM AND ATMOSPHERE HEAT TREATING + BLACK OXIDING

## PROCESSES

- ◆ Hardening
- ◆ Tempering
- ◆ Annealing
- ◆ Carburizing
- ◆ Carbo-nitriding
- ◆ Normalizing
- ◆ Stress Relieving
- ◆ Precipitation HT
- Commercial Black Oxide
- ISO 9001 and AS 9100



**Nadcap  
Certified**

**Federal  
Firearms  
License**

## MATERIALS

- ◆ Tool Steels
- ◆ Stainless Steels
- ◆ High Speed Steels
- ◆ Alloy Steels
- ◆ Carbon Steels
- ◆ Super Alloys
- ◆ Non-Ferrous
- ◆ PH Steels



Tel: 860-523-9090  
Fax: 860-236-8052  
565 Cedar Street  
Newington, CT 06111  
Andy@sousacorp.com  
www.sousacorp.com

# HEAT TREATING

- Vacuum High Pressure Quench
- Non - Ferrous Heat Treat
- Austempering
- Marquenching
- Carburizing
- Nitrogen Tempering
- Solution Heat Treating
- Water Quenching

- ### MATERIALS
- High Speed Steels
  - Alloy Steels
  - Tool Steels
  - Stainless Steel
  - Aluminum
  - Plastics



**HARDLINE**  
HEAT TREATING, INC.

## OTHER SERVICES

- Bright Hardening
- Cryogenics to -300°F
- Glass Bead Blast
- Grit Blast Clean
- Plastics Thermal Treatment
- Precipitation Hardening
- Anneal & Normalization
- Metallography
- Stress Relieving

Consistent On Time Delivery  
Pickup & Delivery Available  
Member MTI / ASM

134 Ashland Ave. Southbridge, MA 01550  
www.hardlineheattreating.com

Tel: (508) 764-6669 Fax: (508) 764-6654

# BOLD

LASER AUTOMATION

BOLD™ Laser Automation's staff has a long history of building production worthy automation equipment that is cost effective, meets the demand for high volume manufacturing, pilot production and high-value-added batch processing.

BOLD™ are experts in integration of robotics, lasers and material handling to fit your specific requirements. Our team specializes in the sorting, inspecting, handling and laser welding micro sized components, including ESD sensitive devices and medical devices.



CO2 Laser System For PCB Applications



Robotic Laser Deletion System For Automotive Windshields

## Other Services

- Design and Fabrication of Tooling Plates and Machining Fixtures
- Large Format Custom Vacuum Chucks
- Alignment Jigs and Test Jigs (Measurement)
- CNC Machining and 3D Printing For Tooling / Fixtures / Automation / Quick Turn Prototyping



BOLD Laser Automation, Inc. - 25 Harvey Road, Bedford, NH 03110 - Ph: 603-413-5601 - www.boldlaserautomation.com

UNITED TOOL & MACHINE CORPORATION (UTM) - A contract manufacturer and job shop specializing in CNC machining, manual machining, wire and small hole EDM, and metal stamping, has announced the acquisition of B.G. Peck Company (BGP) located in Lawrence, MA. This acquisition aligns with United's long-term growth strategy to better meet the needs of OEM's for high quality, responsive, domestic machining operations. BGP, which opened up shop in 1940, is an ISO 9001:2015 certified company, and will continue on under the guise of UTM as a leading producer of precision fabricated custom parts. The acquisition is the 5th in a 3 year span for United Tool & Machine Corporation.

***Learn more at [www.unitedtoolmachine.com](http://www.unitedtoolmachine.com)***

ACU-GAGE SYSTEMS - A manufacturer of non-contact coordinate measuring machines (CMMs) serving medical, semiconductor, aerospace and other industries, has been awarded Patent No. 10,088,304 by the United States Patent and Trademark Office for our ACU-THIK™ precision thickness measuring system. All 21 patent claims were approved readily because there is no other machine available that can match ACU-THIK™ for thin substrate thickness accuracy across all X, Y coordinates. ACU-THIK™ is an automated thickness measurement tool incorporating dual contact probes for high accuracy inspection of semiconductor wafers and other thin substrates. Six Heidenhain measuring devices are integrated into the ACU-THIK™ system which can be configured to accommodate wafer diameters of 100mm – 400mm and larger.

***Learn more at [www.acu-gage.com](http://www.acu-gage.com)***

DESIGN - 2 - PART (D2P) - America's longest running contract manufacturing trade shows will be hosting the New England D2P Trade Show, September 25 & 26, 2019 at the Royal Plaza Trade Center in Marlborough, MA. The show will exclusively feature 250+ exhibiting job shops and contract manufacturers with manufacturing operations in the United States and provide manufacturing engineers and purchasing personnel the opportunity to meet them face-to-face to source custom parts, components, services, and design. Exhibiting companies will be showcasing their design-through-manufacturing services featuring more than 300 product categories for the metal, plastics, rubber, and electronics industries. This year's event will be the 40th annual D2P Show presented in the Boston area. With over 50 new vendors from last year's show, even previous attendees will find a multitude of new supplier opportunities.

***For more information and to register as a exhibitor or attendee, visit [www.d2p.com](http://www.d2p.com)***

## GOT PRESS? GET THE WORD OUT.

Make sure we're on your press outlet hit list.  
Advertisers in the Gateway have access to promote  
news and events right here to YOUR target market.

***[chris@thegatewaymag.com](mailto:chris@thegatewaymag.com) or call: (877) 463-4020***

# Bodycote

- Specialists in the thermal processing of components used in aerospace & defense industries
- Maintains major accreditations (ISO 9001:2000, AS 9100, Nadcap) and approvals from prime aerospace manufacturers and their supply chains



Call 860.225.7691 or visit [www.bodycote.com](http://www.bodycote.com) for more information

BERLIN  
Connecticut

SOUTH WINDSOR  
Connecticut

IPSWICH  
Massachusetts

WORCESTER  
Massachusetts

LACONIA  
New Hampshire

CINCINNATI  
Ohio

## Processes

- Carburizing
- Electron beam welding
- Ferritic nitro carburizing
- Honeycomb brazing
- Induction treating
- Lindure<sup>®</sup>
- Nitriding
- Pit nitriding
- Vacuum heat treating & brazing

## Materials

- Aluminum
- High temp alloys
- Tool steels

# HIGH PERFORMANCE ALLOY SPECIALIST



**NICKEL  
COBALT  
STAINLESS STEEL  
ALUMINUM ALLOY  
ALUMINUM EXTRUSIONS**

**WATERJET CUTTING  
EDM CUTTING  
MILLING & TURNING  
SAWING  
SHEARING**



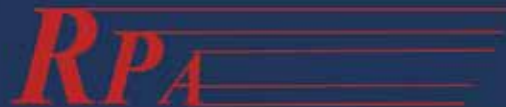
- Near Net Shape Cutting
- Laser Quality Inspection
- Finish Machining

11 Britton Drive Bloomfield, CT 06002  
Tel: 860-882-0019 or 800-214-0475  
Fax: 860-882-0967  
sales@aalloys.com www.aalloys.com



**ISO 9001:2000  
AS 9100B Certified  
P&W LCS APPROVED**

# PRECISION FINISHING



**Batch Deburring  
Bead Blasting  
High Energy Tumbling  
Microscopic Deburring  
Passivating  
Polishing  
Shot Blasting  
Vibratory Tumbling**

ISO 9001:2008 Certified

## PASSAVATING

T:603-335-2132  
F:603-822-2407

[www.rpabrasives.com](http://www.rpabrasives.com)



**BUSINESS PARTNER WANTED**

I have a machine shop and assembly operations with a well-established product line in business over thirty years. I am getting old now, and am looking for someone that I can pass this business on to. Ideal candidate would have a small to medium size shop so we can combine operations to absorb overhead. I have space and extra machine capacity. South Central Connecticut Location. Interested?

**Contact [Schaefer@schaeferco.com](mailto:Schaefer@schaeferco.com)**

**MACHINE SHOP FOR SALE**

Complete turnkey, operating machine shop Bridgeport, CT. Real estate, equipment, parts inventory and clientele.


**Please email: [poplartool@att.net](mailto:poplartool@att.net)**

**ERP SYSTEM/JOB COST ANALYST**

For over 60 years, The MuShield Co. Inc , located in Londonderry NH, has been an industry leader in the design and fabrication of magnetic shields made from high permeability mumetal and sheet metal hydroforming. We've long developed trust and working partnerships with our customers who come to us because they know that we can analyze their issue then design and build a solution for their magnetic interference problems.

**Please call (603) 666-4433**

## Wire & Sinker EDM Services




**5 Axis Wire EDM**

**Orbiting Sinker EDM**

**Tel: 207-743-7273**  
**Fax: 207-743-7269**

**NORTHEAST TOOL & DIE CO., Inc.**

**PO Box 28      16 Aldrich Ave.      Norway, ME 04268**



- ⚙ Metal Stampings
- ⚙ Precision Machining
- ⚙ Prototypes
- ⚙ Fixture Tooling
- ⚙ Compound Dies
- ⚙ Progressive Dies
- ⚙ Secondary Dies
- ⚙ Injection Molds

*Quality Tooling Solutions since 1992*

**[www.northeasttool.com](http://www.northeasttool.com)**



Partnering With

WHEN YOUR INDUSTRY NEEDS COMPRESSED AIR, THEY TRUST **COMAIRCO** TO MEET THEIR EXPECTATION.

Manufacturer's Distributor for **SULLAIR** 



**OIL FREE SCREW FROM 30 TO 550 HP**



**DSP SERIES/30-300 HP**

Flow: 117-1303 cfm / Pressure: 125 psi



**OFD1550 / 550 HP**

Flow: 1550 cfm / Pressure: 125 psi

**OIL FREE SCROLL**



**SRL SERIES SIMPLEX & MULTIPLEX**

Flow: 6-129 cfm / Pressure: up to 145 psi

**OIL FREE CENTRIFUGAL**



**FROM 300 HP to 30 000 HP**

Flow: 500-130 000 cfm / Pressure 20- 600 psi

**We Service Any Kind of Air Compressor and Its Related Ancillary Equipment**

- Installation, System Piping • Low & High Pressure Air Systems
- Medical Air & Vacuum • Maintenance Programs
- Rental Units Available (Delivered & Installed) • Air Dryer Repair

**Engineered Services:** Complete System Design • In-Plant Air Surveys  
• Energy Audits • Leak Detection • Pressure, Flow & KW Monitoring

17 Park Avenue  
Hudson, NH 03051  
Tel.: **603 598-0891**

**EMERGENCY SERVICE**  
**1 800 856-4046**

45 Francis Street  
Leominster, MA 01453  
Tel.: **978 537-6064**

**EMERGENCY SERVICE**  
**1 800 649-6064**

**WWW.COMAIRCO.COM**



**THE FOUNDRY OF THE FUTURE - TODAY**

**Yankee Casting pours three alloy groups:**

- Bronze
- Aluminum
- Magnesium



**Our capabilities:**

- Prototyping
- Design engineering, and CAD and flow modeling
- Pattern creation, repairs, and modifications
- 3D scanning to CAD
- Full production runs
- Robotic cutoff and grinding
- NDT X-ray / FPI
- Heat treat furnace applications
- Tensile testing
- Spectrometer capabilities
- Welding of aluminum and magnesium alloys
- Chemical testing



Telephone: 1-860-749-6171

Fax: 1-860-763-3342

Info: Info@YankeeCasting.com

Hours: Monday - Friday / 7am - 4pm



**BUILDING FOR SALE**

37 Inwood Road FOR SALE OR LEASE  
 17,250 square feet of manufacturing space  
 including 1500 square feet of office with furniture,  
 Conveniently located in Rocky Hill, CT.  
 Building is equipped with compressed air  
 system, deburring room, inspection room,  
 assembly department, and 1200 AMP electrical  
 service. Excellent opportunity for  
 growing machine shop.

Call owner, no agents please.  
 860-614-3592

**DYNAMIC BALANCING**



*Industrial, Medical & Commercial  
 applications from one piece to large production runs.*

Pump Impellers - Fan Wheels - Prototype Development  
 Gears - Motor Armatures - Sheaves and Pulleys -  
 Flywheels - Couplings - Much More

8 Donnelly Road, PO Box 303 Spencer, MA 01562  
[www.ne-spintech.com](http://www.ne-spintech.com)

Tel: 508-885-5300 Fax: 508-835-6831

Companies that use  
 WD-40....

Du-Lite's RG-55 cost less, last  
 longer and protects parts  
 from corrosion for up to 18 months  
 when stored indoors.

ASK FOR FREE SAMPLES  
 CALL 860-347-2505

OR EMAIL: [dulite@sbcglobal.net](mailto:dulite@sbcglobal.net)  
[WWW.DU-LITE.COM](http://WWW.DU-LITE.COM)

**WANTED OLD  
 GAS FORK LIFTS**



We Buy Old Forklifts for  
 Parts. Gas or Electric,  
 Large or Small,  
 Running or Not.

We pay reasonable prices.  
 Call Walt 860-508-9164  
 Will Pick Up and Pay Cash

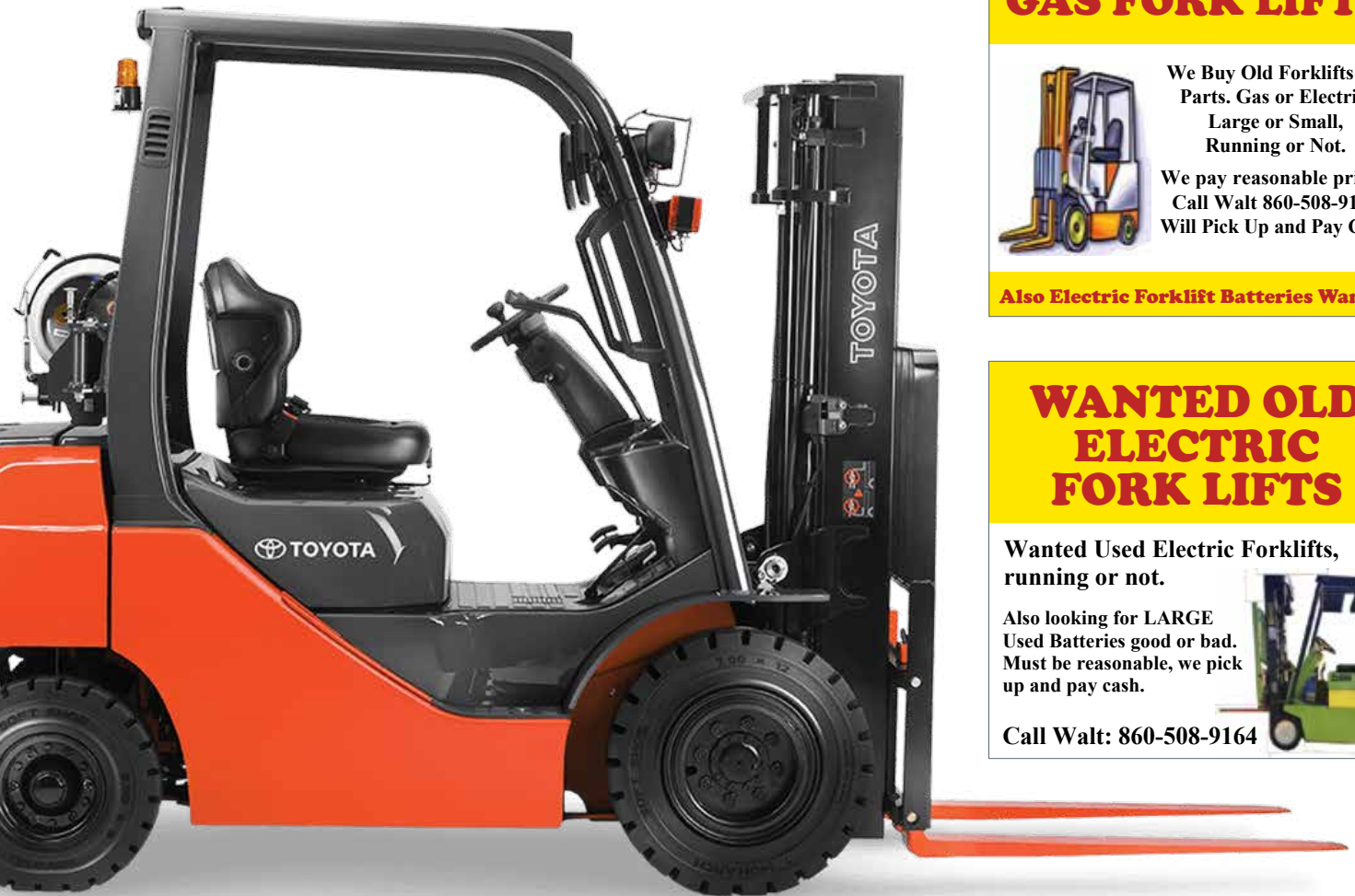
**Also Electric Forklift Batteries Wanted**

**WANTED OLD  
 ELECTRIC  
 FORK LIFTS**

Wanted Used Electric Forklifts,  
 running or not.

Also looking for LARGE  
 Used Batteries good or bad.  
 Must be reasonable, we pick  
 up and pay cash.

Call Walt: 860-508-9164



# CONNECTICUT TOOLING & MACHINING ASSOCIATION

**Dee Babkirk**

The Executive Suites

440 North Main St Bristol, CT 06010

Tel: **860-604-8963** | Fax: **860-254-7191** | [www.ct-ntma.org](http://www.ct-ntma.org)

If you have a question, or need more info, contact: [d.babkirk@centralctchambers.org](mailto:d.babkirk@centralctchambers.org)


## Qualified Tool and Gage Makers are Critical to Your Success!



Your manufacturing environment demands skilled tool and gage makers ready to take on every day challenges without delay.

- Does the need for precision tooling fixtures and gages have you scrambling to meet your customers requirements?
- Do you need a reliable, qualified tool room to manufacture your fixtures, tooling, and custom gages?

**We have the TEAM to help you!**

MADE IN AMERICA AT AN  COMPANY



Website: [www.siroistool.com](http://www.siroistool.com)  
Phone: (860) 828-5327  
Email: [info@siroistool.com](mailto:info@siroistool.com)



Website: [www.dowgage.com](http://www.dowgage.com)  
Phone: (860) 828-2450  
Email: [sales@dowgage.com](mailto:sales@dowgage.com)



Website: [www.naspringtool.com](http://www.naspringtool.com)  
Phone: (860) 583-1693  
Email: [info@naspringtool.com](mailto:info@naspringtool.com)

The Sirois Tool Companies are located at 169 White Oak Drive • Berlin, CT 06037



**CENTERLESS GRINDING  
& THREAD ROLLING**

25 Rosenthal Street ■ East Hartford, CT 06108  
phone: (860) 289-2987 ■ fax: (860) 289-3142  
web: [www.unitedcgr.com](http://www.unitedcgr.com)  
e-mail: [njgoulet@unitedcgr.com](mailto:njgoulet@unitedcgr.com)



Precision Metal Stamping  
Precision Assembly

CNC Machining  
Secondary Operations

**The best place to start your  
precision metal part**



Phone: 860 -349-1756 | [www.hobsonmotzer.com](http://www.hobsonmotzer.com)

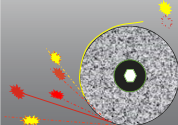
## PRECISION GRINDING

ID & OD GRINDING  
HONING

SURFACE GRINDING  
CNC CYLINDRICAL


◎ Top Quality ◎ Any Quantity ◎ Pickup & Delivery ◎ Same Day Quotes

We serve job shops and do not do machining work!  
Don't turn jobs away if you don't offer grinding! We can help you!



**BAY STATE MACHINE, LLC**

21 Center Parkway Plainfield, CT 06374  
Tel: 860-230-0054 Fax: 860-230-0027  
[baystatemachine@hotmail.com](mailto:baystatemachine@hotmail.com)



**We Armor Your Assets**

# MuShield®

AS:9100D | ISO 9001:2015 Certified | ITAR Registered Company

For over sixty years, The MuShield Company has been a worldwide industry leader as a manufacturer of custom magnetic shields and precision sheet metal fabrication.



For Orders and Pricing:  
Contact MuShield today for more information  
[ 888.669.3549 ]

The Mushman Company, 9 Ricker Avenue, Londonderry, NH 03053 | Toll Free: 888.669.3539 | info@MuShield.com  
[MuShield.com](http://MuShield.com) | [MuMetal.com](http://MuMetal.com) | [HydroformingManufacturing.com](http://HydroformingManufacturing.com) | [CryoPermShielding.com](http://CryoPermShielding.com)



10 Riedell Rd  
Douglas, MA 01516  
508-476-1200

Visit us at [monalexnmfg.com](http://monalexnmfg.com)

At our facility, you'll find state of the art CNC equipment and tooling, used to engage in machining of raw material to customer specification. We currently serve industries for oil and gas, aerospace, medical, automotive aftermarket- just to name a few.

While we work with typical materials such as **steel, aluminum, and plastics**, we also excel in working with **STAINLESS STEEL AND EXOTICS SUCH AS: TITANIUM, HASTELLOY, MONEL, AND MORE!**

**"Machining with precision and efficiency for over 27 years!"**



We use the Micro-Vu Vertex Automated Precision Measurement System-- which stands boldly up to the challenge of perfecting the inspection process!

**We gratefully accept the challenge that each new job brings!**

UPCOMING REGIONAL EVENTS

September 23: Providence, RI

CONGRESSIONAL  
MANUFACTURING SUMMIT

[www.rimanufacturers.com](http://www.rimanufacturers.com)

September 25-26: Marlborough, MA

NEW ENGLAND DESIGN-2-PART SHOW

[www.d2p.com](http://www.d2p.com)

September 26: Essex Jct., VT

MANUFACTURED IN VERMONT

[www.manufacturedinvt.com](http://www.manufacturedinvt.com)

October 1-2: Boston, MA

CYBERSECURITY IN  
MANUFACTURING CONFERENCE

[www.cybersecuritymfg.com](http://www.cybersecuritymfg.com)

October 3: Woonsocket, RI

MANUFACTURING WEEK KICKOFF

[www.rimanufacturers.com](http://www.rimanufacturers.com)

October 12-14: Boston, MA

6TH INTERNATIONAL CONFERENCE ON  
MECHANICAL, MATERIALS AND MANUFACTURING

[www.icmmm.org](http://www.icmmm.org)



**Meet New Suppliers  
& See New Technologies**  
at New England's Premier Design & Contract Manufacturing Trade Show!

**DESIGN 2 PART SHOWS**

**2 DAYS!**  
**Sept. 25 & 26**  
**Marlborough, MA**  
Royal Plaza Trade Center  
Register for FREE Admission  
**D2P.com**

**Metal, Plastic, Rubber, Electronics**  
From Design & Prototypes to Production & Finishing

**Compare Vendors • Improve Quality • Reduce Your Costs**

For More Information or for FREE Show Registration, **D2P.com** @Design2Part

MADE IN USA for over 40 years



THE  
Gateway  
MAGAZINE



PO Box 428 Portsmouth, NH 03802 | Toll Free: 877.463.4020 | [info@thegatewaymag.com](mailto:info@thegatewaymag.com)

[www.TheGatewayMag.com](http://www.TheGatewayMag.com)